



TWIK-3 Polyclonal Antibody

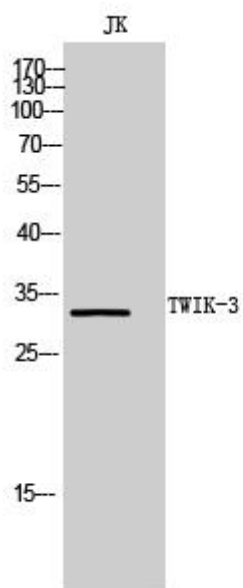
Catalog No	YP-Ab-16508
Isotype	IgG
Reactivity	Human;Rat;Mouse;
Applications	WB;ELISA
Gene Name	KCNK7
Protein Name	Potassium channel subfamily K member 7
Immunogen	Synthesized peptide derived from TWIK-3 . at AA range: 170-250
Specificity	TWIK-3 Polyclonal Antibody detects endogenous levels of TWIK-3 protein.
Formulation	Liquid in PBS containing 50% glycerol, 0.5% BSA and 0.02% sodium azide.
Source	Polyclonal, Rabbit,IgG
Purification	The antibody was affinity-purified from rabbit antiserum by affinity-chromatography using epitope-specific immunogen.
Dilution	Western Blot: 1/500 - 1/2000. ELISA: 1/40000. Not yet tested in other applications.
Concentration	1 mg/ml
Purity	≥90%
Storage Stability	-20°C/1 year
Synonyms	KCNK7; Potassium channel subfamily K member 7
Observed Band	32kD
Cell Pathway	Membrane ; Multi-pass membrane protein .
Tissue Specificity	Brain,PCR rescued clones,
Function	function:Probable potassium channel subunit. No channel activity observed in vitro as protein remains in the endoplasmic reticulum. May need to associate with an as yet unknown partner in order to reach the plasma membrane.,similarity:Belongs to the two pore domain potassium channel (TC 1.A.1.8) family.,subunit:Homodimer .,
Background	This gene encodes a member of the superfamily of potassium channel proteins containing two pore-forming P domains. The product of this gene has not been shown to be a functional channel; however, it may require other non-pore-forming proteins for activity. Multiple transcript variants encoding different isoforms have been found for this gene. [provided by RefSeq, Jul 2008],
matters needing attention	Avoid repeated freezing and thawing!



Usage suggestions

This product can be used in immunological reaction related experiments. For more information, please consult technical personnel.

Products Images



Western Blot analysis of JK cells using TWIK-3 Polyclonal Antibody. Secondary antibody(catalog#:RS0002) was diluted at 1:20000